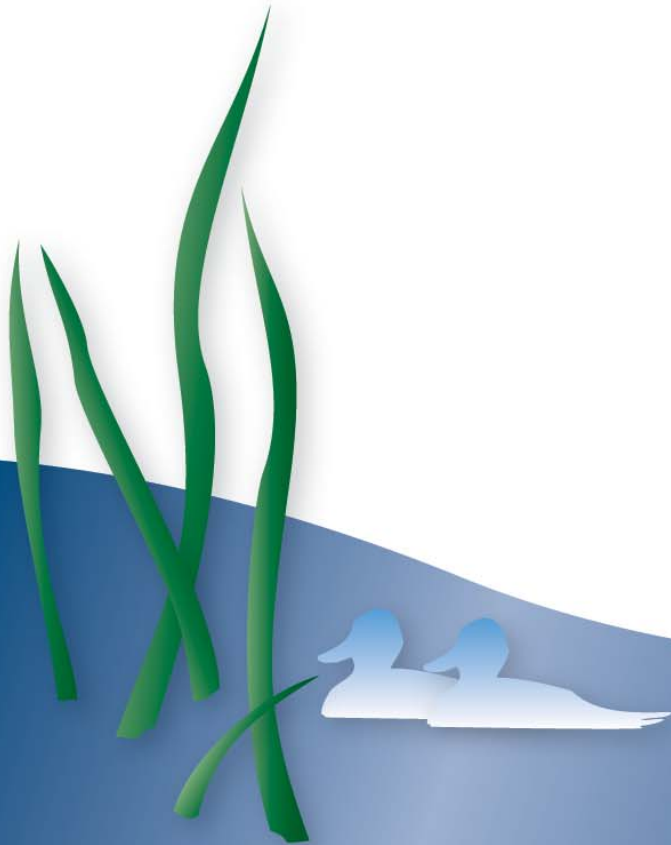
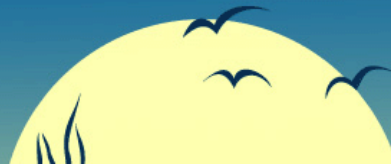


Volume 19, Number 3

HAZMATTERS





A MESSAGE FROM THE PRESIDENT, CORINNE GREENBERG, CHMM

Dear Fellow Chapter Members,

I can scarcely believe that this will be my last presidential letter to you. It seems like only yesterday that I agreed to fill the remainder of Jonathan Eckles' vice presidency (that was September 2009). My, time truly does fly when one is having fun!

I think most of you will agree that this year has been a big one for KCHMM. Just over a year ago we updated our Chapter constitution and bylaws, an effort that itself was year-long, to address deficiencies of the previous governing documents that dated back to 1996. Then, in December 2009, we had our first contested ballot in several years, where six candidates were nominated for the five Director-at-Large positions. The duly elected 2010 Board took office in January, and by March we entered into an unprecedented Chapter Affiliation Agreement with AHMP. At that point, lest we get settled into any familiar routines, by the middle of 2010 our meeting venue of many, many years, Breckinridge Inn, lost their in-house chef to retirement, dismissed their wait staff, and contracted an outside catering vendor that would have doubled our meeting costs (and effectively priced themselves right out of our budget). So mid-year we scrambled and found ourselves a new regular meeting place at Mulligan's in the Highlands, with the University Club as an alternate venue that we all enjoyed for our annual social meeting in November.

And, of all the efforts of this past year, that November meeting was perhaps the biggest accomplishment of all. We reopened negotiations with the University of Louisville regarding the Rachel Davis Endowment that had been sitting untouched and unused since its establishment 2003. We raised sponsor monies and made additional contributions from the Chapter treasury to renovate the UofL Dean of Arts & Sciences' conference room as a pilot project and model "green" room utilizing the latest technologies in sustainable interior design. And, last but certainly not least, we dedicated the "Rachel Davis Green Conference Room" in Rachel's memory on an otherwise cold and dark night a little over a month ago – a night that was, however, warmed and brightened by everyone's participation and enthusiasm. Rachel would, indeed, have been very pleased to see us all come together for such a purposeful cause.



ISSUE HIGHLIGHTS:

- Page 3: 2011 Officer Election Results
- Page 4: 2011 Committee Chairs
- Page 5: January Meeting Announcement
- Page 6: Rachel Davis Award Winner and Green Conference Room Highlights
- Page 8: Science Fair Volunteers Needed

...continued on Page 3

OFFICERS ELECTED FOR 2011

The 2011 KCHMM Officer Elections were held in December 2010. Congratulations to those elected, who will serve in their positions for a one year term.

President: **Celeste Sutter, CHMM**

Director: **Bruce Gaylord, CHMM**

Vice President: **Larry Schumer, CHMM**

Director: **Tom Herman**

Treasurer: **Vickie Sammons, CHMM**

Director: **Mark Hussung, CHMM**

Secretary: **Brad Coyle, CHMM**

Director: **Ralph McCord**

Director: **Kenny Reutlinger, CHMM**

A Message From the President, continued from page 2:

Now we close out the year the same way we started – with another contested ballot, with six more candidates vying for the five Director-at-Large positions. And in less than a week they will be installed in their new positions and will carry us forward into 2011. I can't wait to see what the New Year has in store for the Chapter. I am optimistic.

Finally, before we leave 2010 altogether, I must inject a personal note once again thanking you for choosing me to receive this year's Rachel Davis Award. It was truly a surprise, and I am genuinely humbled and honored. Please know that I am grateful for your support and I look forward to continuing to serve on the new Board as past president (now that I've finally settled into a groove!) and am anxious to give back even more what has been given to me – blessings.

And I strongly encourage each and every one of you to consider how you, too, may maximize your KCHMM experience. Presently we have vacancies to chair the Legislative Affairs committee (tracks new regulatory developments), Membership committee (encourages new memberships) and the Education committee (coordinates course offerings sponsored or promoted by KCHMM). Any member, certified or noncertified, can chair or serve on a committee, and your contributions will be immediately recognized. Additionally, I am hopeful that we will end the coming year by continuing our new trend – with contested elections. We will be looking for a certified member (CHMM or CHMP) to run for the vice presidency in 2012 (and, presumably, to serve as 2013 president), and any member in good standing can run for any other position – treasurer, secretary, or Director-at-Large. Just something to consider – you know, this is not the last you'll hear from me, as the past president automatically chairs the Election committee at the end of the year... something to look forward to. And, trust me, you'll enjoy it.

Until then, peace...

Corinne M. Greenberg, CHMM
2010 KCHMM President

KCHMM COMMITTEE CHAIRS FOR 2011

Education (vacant)
Outreach & Publicity-Michelle Baker
Legislative Affairs (vacant)
Job Registry-Curt Jones
Membership-(vacant)
Credential Promotion-Doug Shelburne
Website-Patty Mason
Newsletter-Bryant Lewis
Stewardship / Earth Day / KY EXCEL-Corinne Greenberg

If you are interested in leading a vacant committee, please contact Celeste Sutter at sutterc@hanover.edu.

NEW CHAPTER MEMBERS

New KCHMM Members:

- Bob Goetz
- Cathy Price, CHMM
- Patty Mason
- Luran Sturm

CHECK OUT THE WEB SITE FOR NEW CONTENT AND JOB LISTINGS

The Chapter website at www.kchmm.org has recently been updated with new job listings, meeting dates, and other information. If you have additional information for the web site, please contact Patty Mason at pattym@smithmanage.com. Job listings can be sent to Curt Jones at cjones@midwestenvironmentalservices.com.

2011 CHAPTER DUES

2011 Chapter dues are now being collected, and there are several ways to pay.

- 1) Add \$35 to your 2011 ACHMM renewal fee and designate for KCHMM.
- 2) Mail a check for \$35 payable to KCHMM to:
KCHMM
P.O. Box 18009
Louisville, KY 40261-0009
- 3) Pay at the next meeting.

Please update your contact information at this time if needed. Thanks for continuing your membership!

NEXT KCHMM MEETING: WED JANUARY 5, 2011, MULLIGAN'S PUB & GRILLE

**"How Does the EHS Professional Fit Into a Green Building Team?
Let Us Count the Ways."**

Maria Koetter, BGreen2

Mulligan's is located at the intersection of Newburg Rd. & Speed Ave. in the Highlands, exactly 1.9 miles north of I-264 ("the Watterson"), just north of Bellarmine University and across from St. Agnes Church & School. Parking lot in back of restaurant off Speed Ave. Our meeting is in Mulligan's private room upstairs.

Please indicate your selection from one of the following dinner choices when making your reservation:

- RIBEYE HOAGIE sandwich with potato wedges (6-7 oz USDA Choice Ribeye on a hoagie roll with melted mozzarella & onions)
- REUBEN sandwich with homemade potato chips (Certified Angus Beef with sauerkraut, Swiss cheese & 1000 Island dressing on toasted rye)
- GRILLED CHICKEN sandwich (on whole wheat bread) with a baked potato
- VEGETARIAN OPTION: Large house salad (lettuce blend with cucumber & tomato) with a baked potato

All meals served with a nice hot bowl of their house special bean soup (yum-o!), ice water or iced tea or hot coffee, and a brownie for dessert. ☺

Please RSVP including your name, dinner selection, and number of reservations before 5:00 PM on Monday, Jan. 3, to our Treasurer, Vickie Sammons, via sammonsvl@cdm.com.

NOTE: RESERVATIONS MADE AFTER 5:00 PM ON 1/3/2011 WILL NOT QUALIFY FOR THE \$5 DISCOUNT.

Visitors are always welcome! Please feel free to pass this meeting notice on to a friend or colleague. They need not be a member to attend (just RSVP by 1/3 and pay the \$20 discounted meeting fee).

Our dinner meeting schedule:

- Chapter Board Meeting 4:30 to 5:30 p.m.,
- Social hour begins at 5:30 p.m.,
- Dinner served at approximately 6:15 p.m.,
- The business meeting will start at around 6:50 p.m., with
- Technical presentation immediately following (7:00 - 8:00 p.m.)

Meeting Costs: Cost for the meeting is \$20 for those that RSVP before 5 PM on Monday 1/3/2011, or \$25 if you do not RSVP. If you make a reservation and do not attend, an invoice for \$20 will be mailed to you. Make all checks payable to KCHMM.

Looking forward to seeing you there! ☺

THE RACHEL DAVIS AWARD PRESENTATION AND GREEN CONFERENCE ROOM

At November's meeting, Al Goodman presented Corinne Greenberg with the 2010 Rachel Davis Award. The award recognizes publicly demonstrated commitment to the Chapter and its mission. Past recipients include Al Goodman, Cheri Hildreth, Karen Blake, Jennifer Triplett, Evelyn Crooks, Jim Plum, and Brent Fryrear.



KCHMM members received a first glimpse of the new Rachel Davis Green Conference Room, within Gardiner Hall at the University of Louisville. Here, Corinne hangs the wall plaque that has been engraved with an acknowledgement to Rachel. The room will feature "green" furnishings and materials, and will serve as a model for green construction and renovation.

SPONSORS OF THE NOVEMBER RACHEL DAVIS GREEN ROOM MEETING

- **Terra Systems**... an international bioremediation products and services company ... see member Dick Raymond.
- **Microbac**... a full service laboratory with a local presence and a national reputation, for all your environmental testing needs... see members Ken Ford and Andrew Clifton.
- **BGreen2**... a consulting firm specializing in corporate social responsibility, designing and implementing business sustainability programs, coaching and facilitating Green Teams, and LEED project management...see member Maria Koetter.
- **Industrial Container Services of KY**... a steel drum reconditioning facility, accepting empty used drums for reclamation and selling UN-rated containers for your hazmat and other product needs... see member Corinne Greenberg.
- **NEC**... a contractor performing commercial & industrial asbestos & lead abatement and related environmental clean-up, including demolition services... see member Neil Stamp.
- **Camp Dresser McKee**... a global consulting, engineering, construction and operations firm working to improve infrastructure and the environment... see members Phil Hendershot, Vicki Sammons, Al Goodman and Bryant Lewis.
- **Shelburne Environmental Management**... a consulting firm specializing in EPA, OSHA, and DOT compliance and training, including process safety management and risk management planning...see member Doug Shelburne.
- **Micah Group**... a HUBZone-Certified Small Business providing environmental contracting services for facility energy evaluation/rehabilitations, HVAC renovations, asbestos/lead surveys/ abatement, hazardous waste management, soil & groundwater investigation and remediation and alternative energy solutions ... see member Gil Alexander.
- **Sud Chemie**... the world's largest manufacturer of petrochemical catalysts... see member Michelle Baker.
- **Regenesis**... an environmental remediation technology firm specializing in in-situ remediation and vapor intrusion management... see member Barry Poling.
- **AMEC**... an international consulting company specializing in the environmental, archaeological, engineering, construction and energy disciplines ... see members Kristin Schuhmann, Aaron Benson and Kenny Reutlinger.
- **BAE Systems**... a manufacturer of weapons systems for the military...see members Mark Spaulding and Sandy Tucker.
- **Zeon Chemicals**... a specialty elastomers manufacturer, with its U.S. headquarters, R&D Center and largest manufacturing plant in Louisville ... see Member Tom Herman.
- **Stites & Harbison**... a full-service law firm whose Environmental, Natural Resource and Energy attorneys provide routine compliance advice on regulatory issues, defend enforcement actions in the air, water, waste and mining programs, and assist in a variety of business ventures involving environmental, natural resources and energy law... see members Lauran Strum and Pat Stallard.



SCIENCE FAIR VOLUNTEERS NEEDED

The Louisville Regional Science Fair Board is seeking our members' expertise and time to serve as judges at the Louisville Regional Science Fair (LRSF) this next spring to support this important educational opportunity for the young and talented students of our local area. That is, the Louisville Regional Science Fair Committee NEEDS YOUR HELP for the upcoming Science Fair competition next March. Each year, we hold the fair at the UL campus.

Professionals with expertise in math, the sciences, health, engineering, and social sciences, are urgently needed to volunteer as judges at the 47th Annual Louisville Regional Science Fair that will be held at the Swain Student Activities Center, Belknap Campus, University of Louisville on Saturday March 12, 2011. Knowledgeable individuals are needed to judge projects exhibited by middle school (Junior Division) and high school (Senior Division) students. All the projects are judged in the morning session ending at Noon. Judging to select the "best in fair" winners from the top finishers of the morning round is in the afternoon. Individuals may volunteer for either or both sessions. Disciplines in which projects are judged are listed below:

LIFE SCIENCES:

Animal Sciences
Behavioral and Social Sciences
Biochemistry
Cellular and Molecular Biology
Medicine and Health Sciences
Microbiology
Plant Sciences

PHYSICAL SCIENCES (Afternoon Judging) :

Chemistry
Computer Science
Earth and Planetary Science
Engineering: Electrical & Mechanical Engineering
Materials and Bioengineering
Energy and Transportation
Environmental Management
Environmental Sciences
Mathematical Sciences
Physics and Astronomy

At least six years of active professional experience in the discipline being judged may substitute for a masters or doctoral degree. A masters or doctoral degree is "preferred" for judging "Senior" Division projects. Note: Middle and high school teachers from participating schools are not eligible to judge. Parents may not judge projects in the category and division in which their children are competing.

Tentative Fair Day Schedule:

7:45 ---- 8:50am Coffee and pastries at Judges Orientation
9:00 --- 11:30am Category judging and special awards judging
12:00 ---- 1:00pm Lunch Break
1:00 ---- 3:00pm Afternoon judging
3:00 ---- 4:00pm Public viewing of projects
4:00 ---- 6:00pm Awards ceremony

Additional information about the Louisville Regional Science Fairs, Inc. is available at our website:

www.LRSF.org. The interest by entrants is growing and this next spring we anticipate needing at least 25 more judges than in 2010 in order to get the job done. This is a great way for members to "give back" and help our young local students maintain or enhance their interests in the sciences. If you have any questions, or to express interest in volunteering, please contact KCHMM chapter member Gary Spanyer at igspanyer@juno.com.